



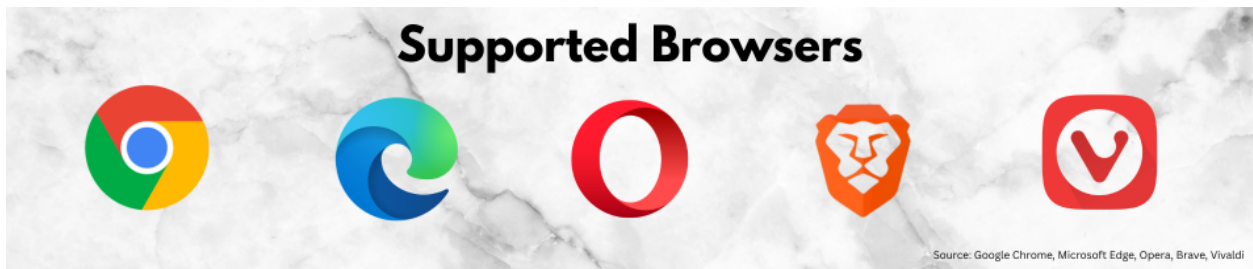
From the Offices of **Human Creative**

Welcome to Certified Human Content™.

5 QUICK TIPS FOR BEST SERVICE

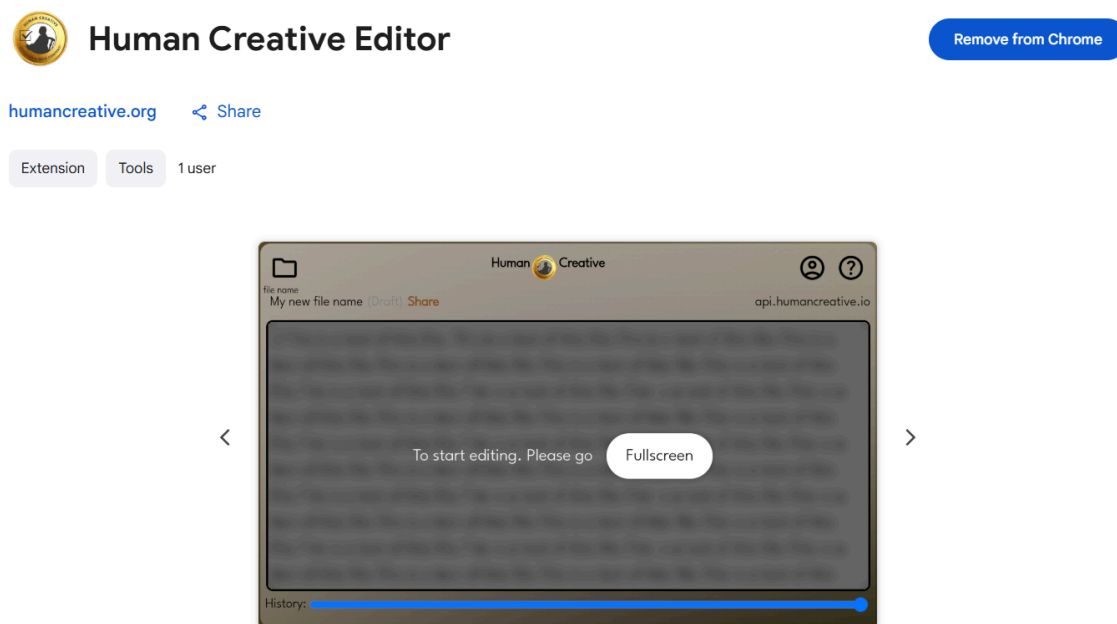
Here are some quick tips to make using our service as efficient and effective as possible:

1. Only utilize a supported browser, or download the computer application.



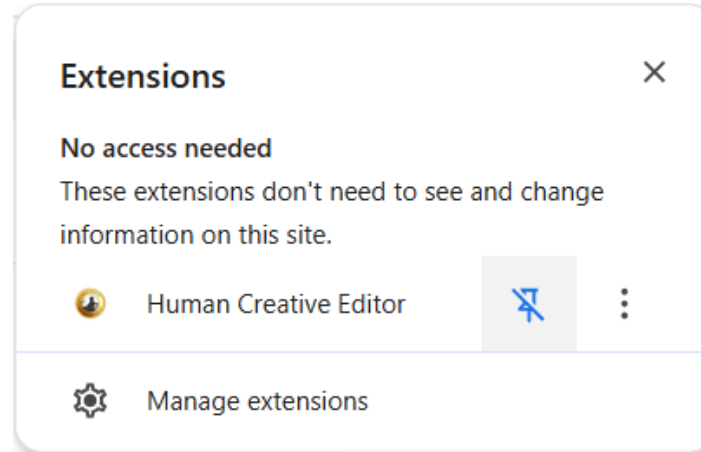
2. Only use one tab of the web-based editor at a time; having more than one can cause the phone-lock/multi-device feature to malfunction. Malfunctions are typically resolved by refreshing the page.

3. When you begin using the software you will be asked to download the extension:



The extension monitors your tabs for generative-AI and also allows you to easily share your certified documents into whatever editor fields you desire (email, social media, blogs, etc).

4. We recommend “pinning” the extension for the best user experience.



5. As we await approval on our app’s publication in the Apple store, you can still phone-link your device.

Go to humancreative.io on your phone based chromium web-browser and clicking the phone-link option.

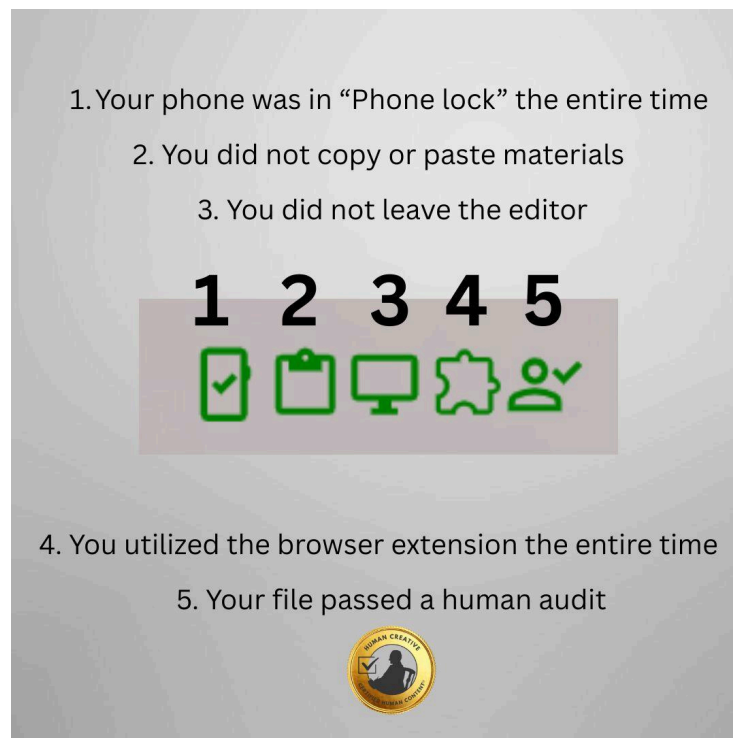
FAQ - Frequently Asked Questions

1. How does the system work?

Certified Human Content™ works by live-monitoring the entire writing process, blocking generative-AI sources, encouraging multi-device monitoring, auditing for AI content, and recording human writing behaviors to provide the highest level of confidence that a written work was produced without generative-AI. Our human auditor system provides an extra-level of confidence that a work was produced without generative-AI.

2. What do the icons mean on my certification page?

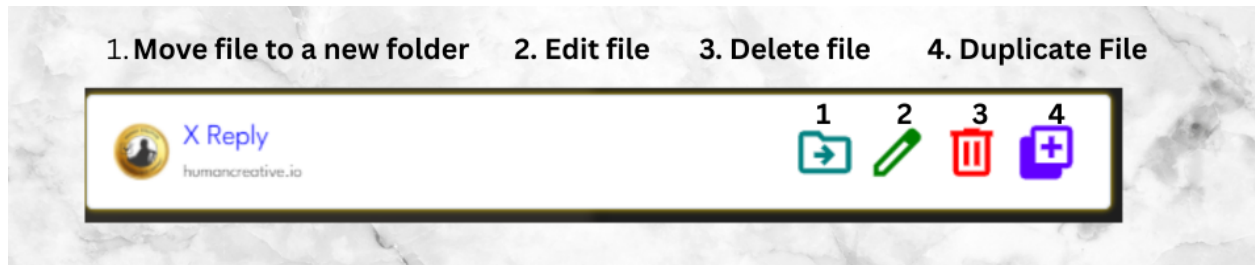
There are currently five icons on a certification page, with additional details that provide transparency about a specific file.



The five icons are: A phone (indicating whether or not a user had linked their phone the entire time a file was being crafted), a clipboard (indicating whether or not a user had pasted content during the crafting of their file, and how many times content was pasted), a desktop (indicating whether or not a user left the editor during the crafting of their file), a puzzle piece (indicating whether or not a user utilized the browser extension during the entire crafting of their file), and a person with a checkmark (indicating whether or not the file had undergone a human auditing process).

Additional details revealed on a certification page are: what devices the user has, and which one they crafted that particular file with, when the file crafting process began and ended, and additional details about the user who crafted the file.

3. What do the file symbols mean?



The symbol which appears like a folder with an arrow inside means you can move this file into a different folder. The green pen indicates you can edit the file. The red trash can indicates you can delete the file. The addition “plus” symbol inside of a square indicates you can duplicate the file.

4. What are the options for certification?



Certification

By certifying this document, it will become read only and cannot be modified.

Note: If you modify the content in another application, it will damage the signature!

Certify Private

Viewers will have to use an Access Code to view content. **Read-only.**
Ideal for sensitive emails

Certify Public

The text will be included on the certificate. **Read-only.**
Ideal for blogs, posts, or non-sensitive emails

Draft

Viewers can see file's current content, with an uncertified disclaimer. **Editable.**
Ideal for updating others or sharing for feedback.

When you certify a file you can certify it in a public way that publicly shows the message to those with the link/QR code, or you can certify it in a private way will requires the verifier to have a code you give them to see the content. You can also choose a “draft” version which enables you to share your progress publicly with a verifier before finishing or being certified.

When you certify, you will have opportunity to request a human audit, share the certification, copy the text of the certification (“Copy Rich Text”) view the certificate, or share via the QR code.

Your file is Certified Human Content™!

See [Certificate](#)

[Share](#) or [Copy Rich Text](#)

Audit Approved

Private: ☐



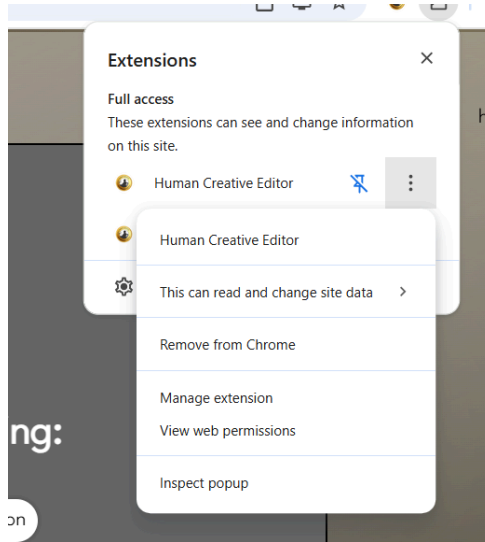
[close](#)

Coming soon:

5. What if I dispute a human auditor decision?
6. What if my file can't be certified?
7. How does a human audit work?
8. How long does it take to have a human audit my file?
9. What if I want to un-certify a file?
10. What if I want to change a certification to private?
11. What do human auditors do with my file's information?

Troubleshooting

If your extension is not registering on the editor, you may need to manage your extension's permission settings.



If your phone lock isn't being recognized, you may need to ensure you do not have multiple tabs of the editor open on your browser/desktop before trying to enter phone lock. After closing the additional tabs, refreshing the browser typically resolves the issue.